

# MONTHLY MEMBERSHIP PROGRESS REPORT

District 11 E2

Results as of: 12/31/2019

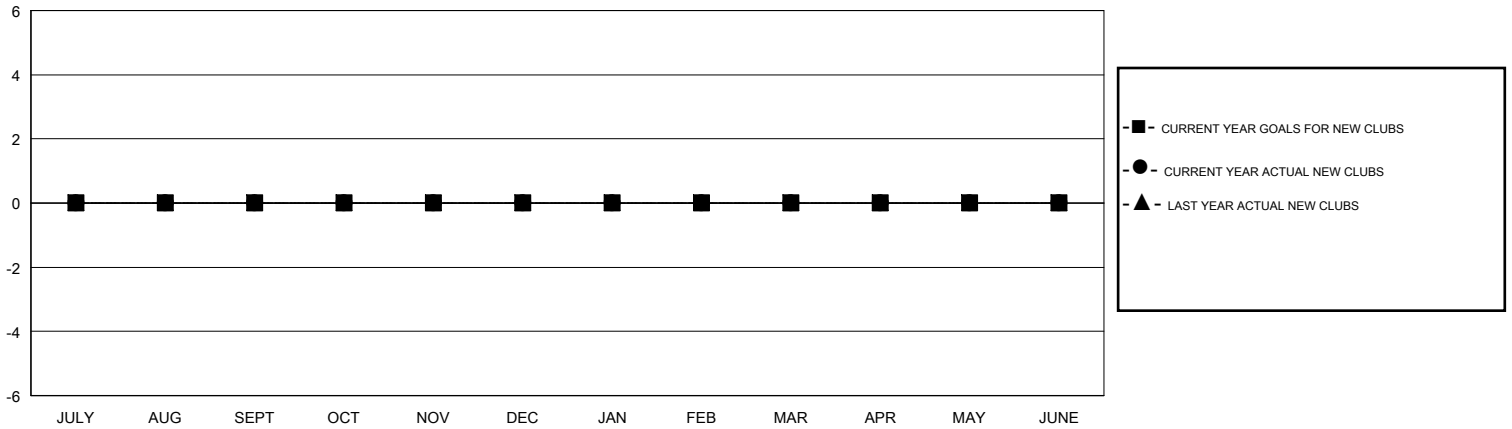
GMT:

LOCATION MICHIGAN

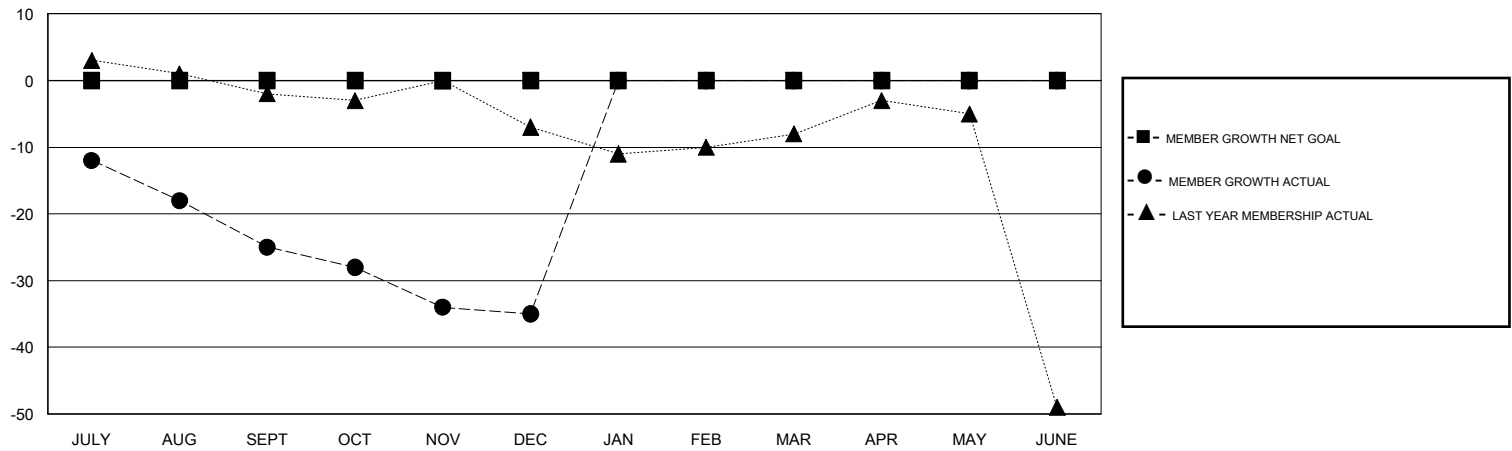
GMT CA

Clubs				Members			
RESULTS FOR 2019-2020				RESULTS FOR 2019-2020			
QUARTER	NEW CLUB GOAL	NEW CLUBS	DROPPED CLUBS	QUARTER	MEMBER GROWTH NET GOAL	MEMBER GROWTH ACTUAL	DROPPED MEMBERS ACTUAL (including transfers)
JULY/AUG/SEPT	0	0	2	JULY/AUG/SEPT	0	6	29
OCT/NOV/DEC	0	0	0	OCT/NOV/DEC	0	10	18
JAN/FEB/MAR	0	0	0	JAN/FEB/MAR	0	0	0
APR/MAY/JUNE	0	0	0	APR/MAY/JUNE	0	0	0

GOALS AND ACTUAL NEW CLUBS CUMULATIVE



GOALS AND ACTUAL MEMBERS CUMULATIVE



DROPPED CLUBS: 2	9 CLUBS OF 32 ADDED 1 OR MORE NEW MEMBERS	<b>GENDER DISTRIBUTION</b> MALE 568 (71.72%) FEMALE 224 (28.28%)
<b>DROPPED MEMBERS</b> DECEASED 9 CLUB CANCELLED 0 OTHER 38 <hr/> TOTAL 47	<a href="#">CLICK HERE FOR CUMULATIVE MEMBERSHIP DATA</a>	TOTAL FAMILY UNIT MEMBERS 101 FAMILY MEMBERS PAYING HALF DUES 51